

# TROUBLESHOOTING

## Common Problems

---

### 1. My AutoEnginuity Chrysler SCI connector won't work with my Bluetooth adaptor.

The data rates on the Chrysler SCI connector are too fast for the Bluetooth option. It will only work with a direct serial cable. If your PDA does not have a serial solution the Chrysler SCI connector will not work with that PDA.

### 2. The ScanTool software did not decode my VIN.

In most cases where a VIN is not decoded, it is because the vehicle does not support this feature. In this case, you will be required to manually select your vehicle information.

### 3. I am manually selecting the Product Line, but don't know which one to select.

This information can be found in your vehicle manufacturer service guides or such third-party information sources as AllData and Mitchell. This is not an AutoEnginuity technical support issue.

### If you still need help consult the User Guide or contact us:

email: [support@autoenginuity.com](mailto:support@autoenginuity.com)

phone: 1-480-326-3257

# Pocket PC Enhanced Chrysler User Guide

**READ ME FIRST!**

## Check Your Package Contents

---

### Your AutoEnginuity Chrysler package should contain:

- 1 x Chrysler SCI connector

**NOTE:** The Chrysler SCI connector uses the same serial sync cable as your OBD-II connector. The serial sync cable required is not provided by AutoEnginuity.

## Before Getting Started

---

Enhanced Chrysler will allow you to access systems not available with generic OBD-II. The enhanced Chrysler option is an add-on to the AutoEnginuity ScanTool. To offer this support, the enhanced Chrysler option utilizes a proprietary electrical interface called SCI. Check to make sure that your ScanTool program is already properly installed and that the enhanced option(s) are activated. Please see your ScanTool User Guide for instructions if necessary.

Only use the Chrysler SCI connector with non-CAN Chrysler, Dodge, Jeep, and Plymouth vehicles. It will not work on any other vehicle make.

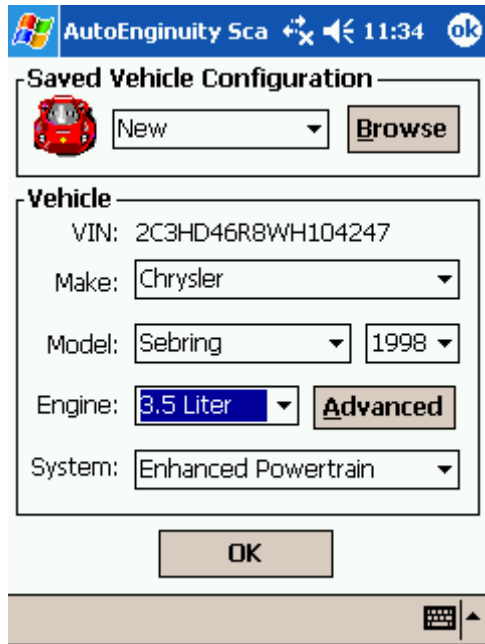
## Connecting to the Vehicle

---

**WARNING:** Do not use a power inverter without an "isolated ground" with any USB product connected to your vehicle. A ground loop may occur.

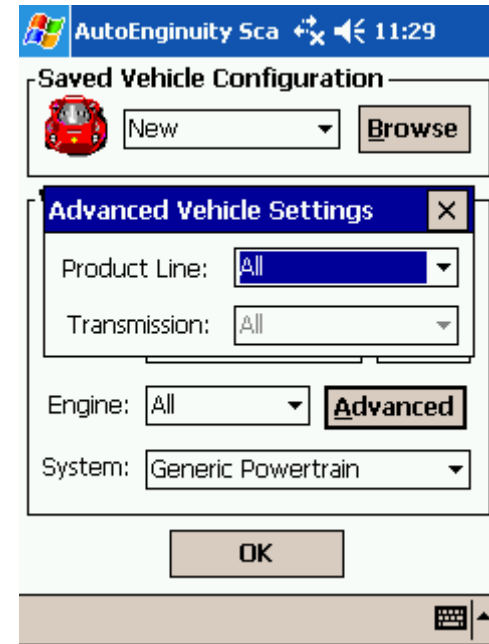
1. Start the ScanTool software.
2. Select *Vehicle | Communication Configuration*.

3. Connect the Chrysler SCI interface to the computing device.
4. Connect the SCI connector to your vehicle's DLC. (See your *ScanTool User Guide* if you need help finding the DLC location.)
5. The ScanTool will now connect to the vehicle. If you do not see the connection screen, select Vehicle | Connect.
6. Once connected to the vehicle, the ScanTool will require you to select the vehicle model information. Selecting this information correctly is very important to obtaining reliable data. If the vehicle's VIN is decoded, this information should already be set for you. Even so, it is imperative that you verify all of the selections in case the VIN can't be completely decoded for various reasons.



7. Tap *Advanced* and select the Product Line and Transmission. If the list has no entries, then proceed to the next step.

8. Tap the X in the upper-right to close the Advanced Vehicle Settings.



9. Select your system. By default the system selected is Enhanced Powertrain.
10. Tap *OK* once the vehicle model information and the system are selected.
11. The connection phase will finalize by retrieving the trouble codes from all of the vehicle systems present. This can take up to 30 seconds.
12. Congratulations, you are now connected to your Chrysler vehicle!

**NOTE: THE O2 SENSOR AND ONBOARD TEST RESULTS TAB DO NOT WORK WHEN CONNECTED WITH THE ENHANCED CHRYSLER OPTION.**

**WARNING: DO NOT ACTUATE ANY COMPONENT OR RUN ANY TEST WITHOUT FOLLOWING CHRYSLER'S DOCUMENTED PROCEDURES. AUTOENGINUITY IS NOT LIABLE FOR THE IMPROPER ACTUATION OF COMPONENTS OR TESTS.**